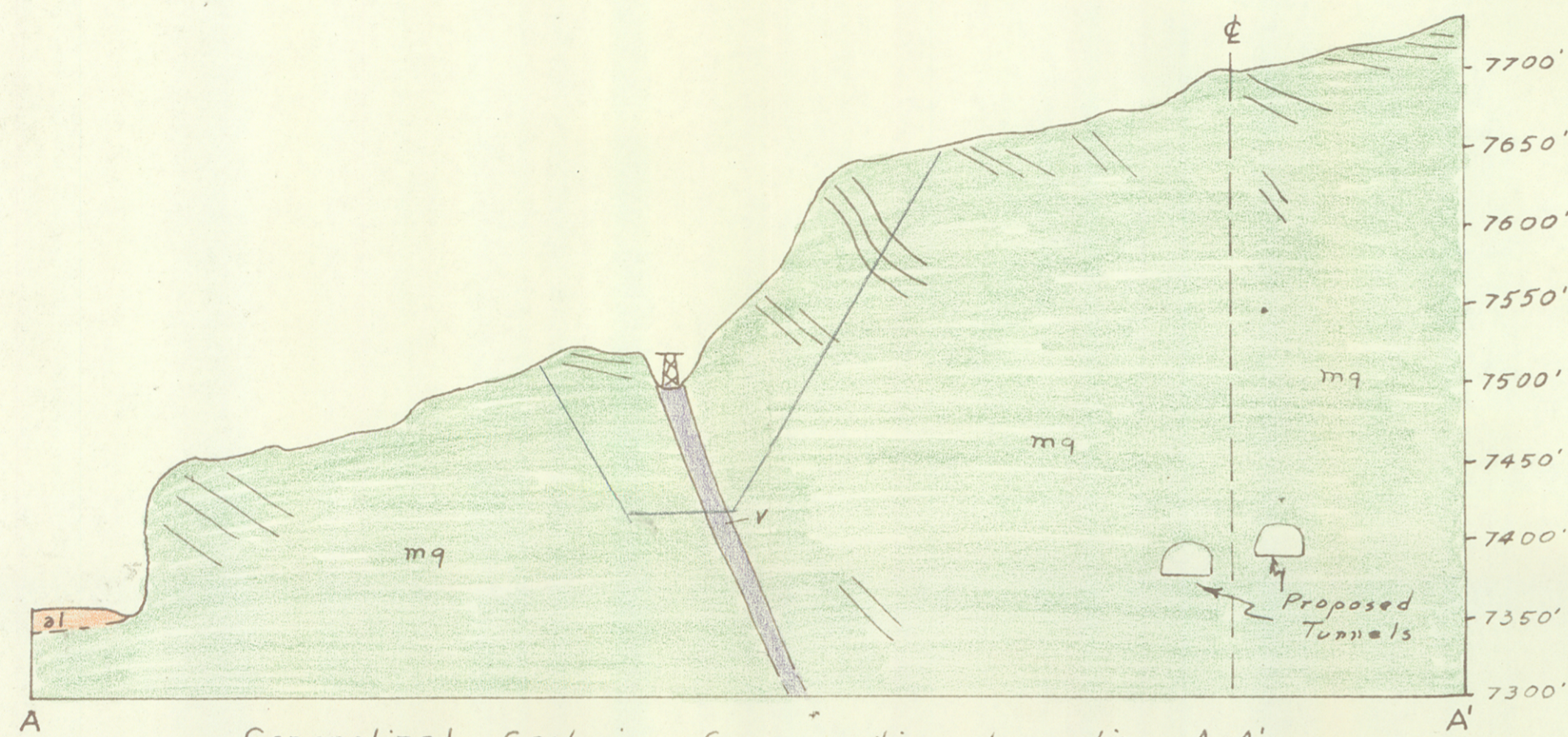


PLAN
 SURVEYED _____
 NOTE BOOK _____
 ALIGNMENT CHECKED _____
 RT. OF WAY CHECKED _____
 NO. _____

PROFILE
 SURVEYED _____
 NOTE BOOK _____
 GRADES CHECKED _____
 B. M. NOTED _____
 STRUCTURE NOTATION CH'VD _____
 NO. _____



OFFICIAL USE ONLY
 This report and/or map is preliminary and has not been edited or revised in accordance with Geological Survey standards or nomenclature.

GEOLOGIC CONDITIONS

Between Stations 170 - 185
 F.A.P. No. I-70-3(1)250
 Clear Creek County,
 Colorado

Prepared by U.S. Geological Survey, Engineering
 Geology Branch, Denver, Colorado.

Legend

- al Alluvium or artificial fill
- t Talus (coverburden on hillside slopes)
- p Pegmatite (coarse-grained granitic rock)
- mq Quartz monzonite gneiss (bedrock in area)
- v Vein
- 133 Dip and strike of bedding or vein
- ⊕ Horizontal bedding

